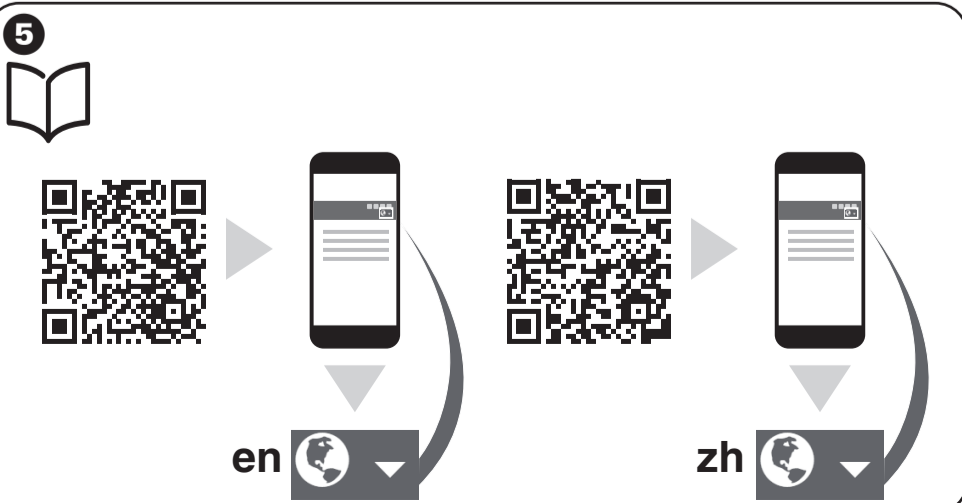
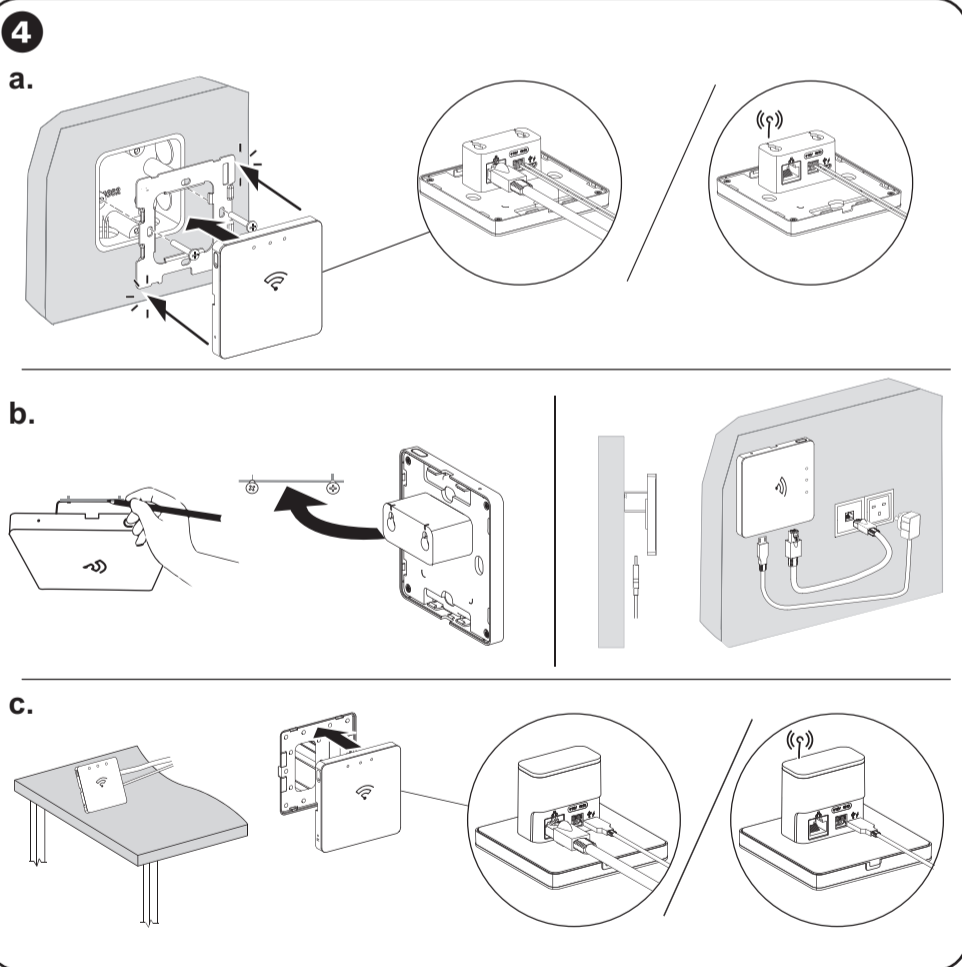
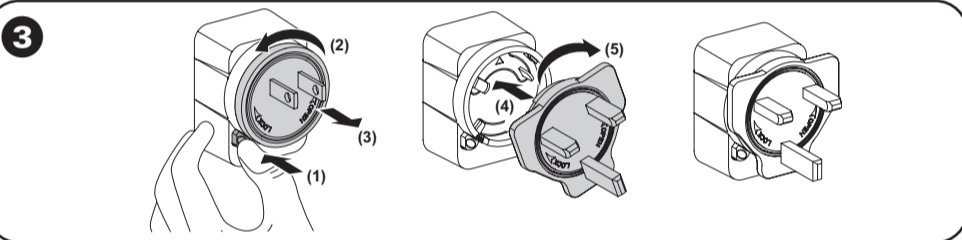
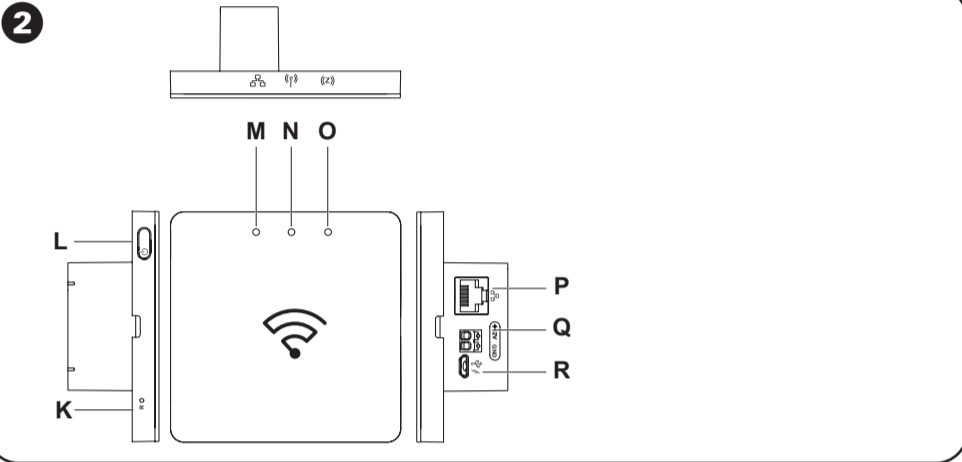
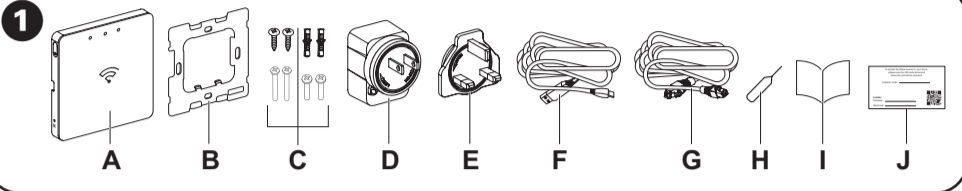




CCT501900



Wiser

**Prerequisites**

Download the Wiser by SE app to your smartphone.

About this product

The Wiser Hub (hereinafter known as **Hub**) is a communication interface that can be connected to all your Wiser Zigbee devices, enabling you to easily manage your home environment.

Functions

- Monitors and controls Wiser Zigbee devices through the mobile app, Ethernet or Wi-Fi®.
- Create *Moments or Automations* to operate Wiser Zigbee devices through the mobile app.

1 Package contents

- A Wiser Hub
- B Metal bracket
- C Screws: 2 × M3.5 × 32 mm, 2 × M4.0 × 25 mm, 2 × ST4.2 × 25 mm with wall plug
- D AC adaptor
- E 3-pin plug
- F AC adaptor USB cable
- G Ethernet cable
- H Reset pin
- I Installation instructions
- J Hand over card

2 Operating elements

- K Reset button
- L Power button
- M Ethernet LED
- N Wi-Fi® LED
- O Zigbee LED
- P Ethernet port
- Q Terminals for power supply (12 VDC)
- R Micro USB port for the AC adaptor

3 Installing the 3-pin plug (Optional)**▲ CAUTION****EQUIPMENT DAMAGE HAZARD**

Do not use the 3-pin plug to power the device in Mainland China.

Failure to follow these instructions can result in injury or equipment damage.

▲ ▲ DANGER**RISK OF ELECTRIC SHOCK, EXPLOSION, OR ARC FLASH**

Make sure that the 2-pin/3-pin plug is inserted in the correct position and rotated clockwise until the plug firmly locks onto the AC adaptor with a 'click' sound.

Failure to follow these instructions will result in death or serious injury.

4 Choose suitable location to install**▲ ▲ DANGER****RISK OF ELECTRIC SHOCK, EXPLOSION, OR ARC FLASH**

- This product must only be installed and serviced by appropriately qualified and/or licenced electrical personnel.
- This product must only be used for the purpose described in these instructions and must be installed in accordance with the wiring rules and regulations in that location.
- Observe the regulations while working on live parts.
- Isolate the electrical supply before doing any work on this product.
- Ensure that the product has been correctly installed and tested for safe operation before reconnecting the electrical supply.

Failure to follow these instructions will result in death or serious injury.

NOTICE**EQUIPMENT DAMAGE**

- If the Hub is powered through the micro USB port, use the provided AC adaptor only.
 - If the Hub is powered on through the terminals, use a suitable 12 VDC power supply only.
- Failure to follow these instructions can result in equipment damage.**

a. Wall box

- Use a standard 86 wall box with a depth of at least 47 mm for installation.
- To power the hub, it is recommended to use a 12 VDC external power supply such as Schneider Electric Phaseo ABLM1A12021.

b. Wall

It is recommended to use the supplied AC adaptor to power the Hub.

c. Table

- Use the tablestand for Wiser Hub CCT501400_0001 when placing the Hub on a table.
- It is recommended to use the supplied AC adaptor to power the Hub.

5 Read full system user guide online

Scan the QR code to access the **Wiser - System User Guide** and choose your language to refer complete information about the device, including operation, configuration and using the system.

Technical data

AC power adaptor	Model number: KA0601A-0501000DEU Input: 100-240 VAC, 50/60 Hz Output: 5.0 VDC, 1.0 A, 5.0 W Average active efficiency: 73.7% @115 VAC, 230 VAC No-load power consumption: 0.1 W @115 VAC, 230 VAC
Power supply	AC adaptor (included in the package) or 12 VDC/0.5 A power supply through 2-pin terminal block (not included in the package)
Connector type	Micro USB port for the AC adaptor 2-pin terminal block cable type: 0.25 mm ² to 1.50 mm ² (24 AWG to 16 AWG)
Communication interface	Ethernet: IEEE802.3, 10/100 base-T (LAN) Wi-Fi®: 2.4 GHz, IEEE802.11 b/g/n Zigbee: 2.4 GHz, IEEE802.15.4
Operating frequency	2405 - 2480 MHz (Zigbee) 2412 - 2472 MHz (Wi-Fi®)
Max. radio frequency power transmitted	<10 mW (Zigbee) <67 mW (Wi-Fi®)
System clock	RTC function with coin battery (CR1220)
IP rating	IP20
Operating temperature	0 °C to 40 °C, indoor use only
Relative humidity	10 % to 90 %, non-condensing
Dimensions (H × W × D)	86 × 86 × 34 mm
Wall box dimensions (H × W × D)	75 × 75 × 47 mm Note: The wall box must have minimum depth of 47 mm.
Communication protocol	Zigbee 3.0 certified
Certification	CE compliant

Trademarks

- Wiser™ is a trademark and the property of Schneider Electric SE, its subsidiaries and affiliated companies.
 - Zigbee® is a registered trademark of the Connectivity Standards Alliance.
 - Apple® and App Store® are brand names or registered trademarks of Apple Inc.
 - Google Play™ Store and Android™ are brand names or registered trademarks of Google Inc.
 - Wi-Fi® is registered trademark of Wi-Fi Alliance®.
- Other brands and registered trademarks are properties of their relevant owners.

Schneider Electric Asia Pacific Limited

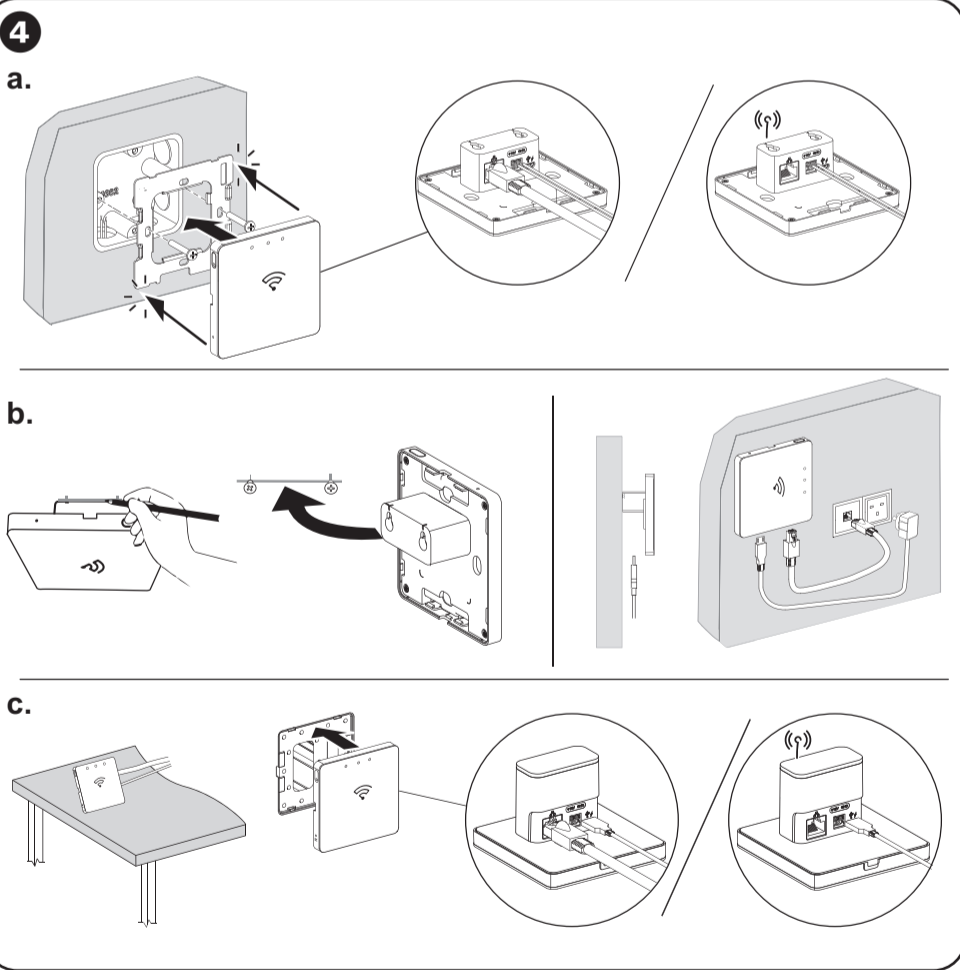
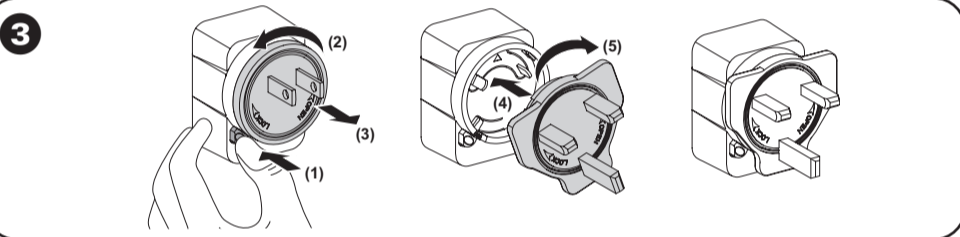
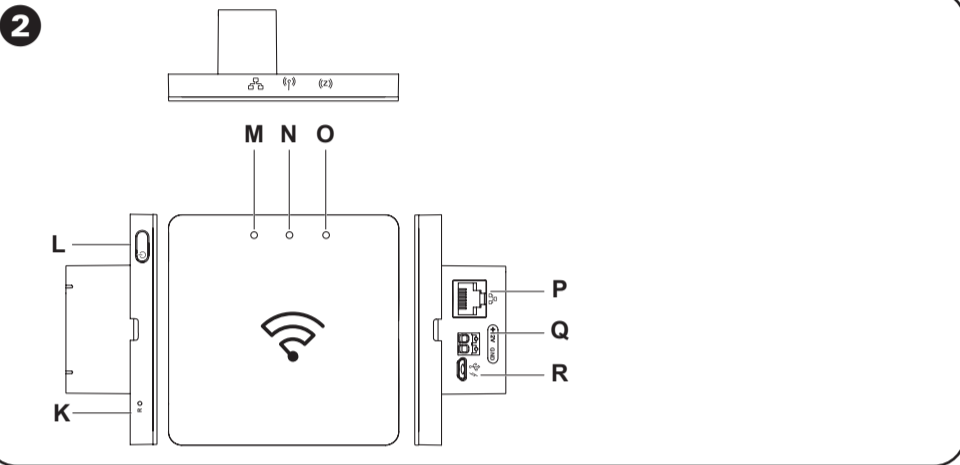
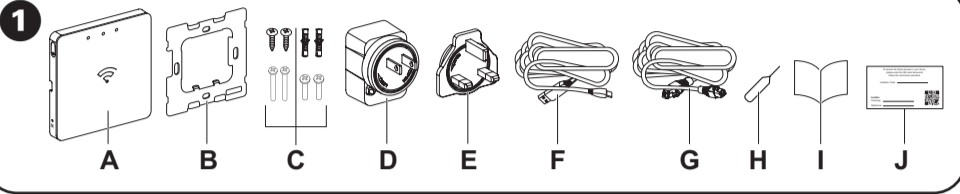
11th Floor, Kerry Centre, 683 King's Road, Quarry Bay, Hong Kong
se.com/contact



CCT501900



Wi-Fi



前提条件

下载Wiser by SE app到您的智能手机。

产品简介

智能家居网关(下文简称网关)是智慧家庭的控制中心。通过它实现Wiser系统里设备的控制与监控,实现语音,远程,自动化控制等功能。

功能

- 网关上行通过Ethernet或WiFi经由家中路由器连接互联网,从而访问Wiser云端。下行通过最新的Zigbee技术连接、控制并监控Wiser Zigbee设备。
- 通过Wiser app创建和管理各种智能生活场景,让家中Wiser Zigbee设备实现自动化联动,并支持设备定时执行及一键场景等功能。

1 包装内容

- A 智能家居网关
- B 金属支架
- C 螺钉: 2 颗 M3.5 × 32 mm, 2 颗 M4.0 × 25 mm, 2 颗 ST4.2 × 25 mm (塑胶套管)
- D AC 适配器
- E 英式插头
- F AC 适配器 USB 线
- G 网线
- H 复位针
- I 安装说明书
- J 系统移交卡片

2 操作元件

- K 重置按键
- L 电源按键
- M Ethernet LED
- N Wi-Fi® LED
- O Zigbee LED
- P Ethernet 端口
- Q 电源端子 (12 VDC)
- R 用于 AC 适配器的微型 USB 端口

3 安装英式插头 (可选)

▲ 小心

设备损坏危险
请勿在中国大陆使用英式插头为设备供电。
若不遵守此说明,则可能会导致设备损坏。

▲ ▲ 危险

触电、爆炸或电弧闪光危险
中式、英式插头必须插入到正确的位置,并沿顺时针方向旋转,直到插头与 AC 适配器锁紧,发出“咔哒”声。
若不遵守此说明,则可能会导致死亡或重伤。

4 选择合适位置安装网关

▲ ▲ 危险

触电、爆炸或电弧闪光危险

- 本产品应仅由具有相应资质和/或获得相应证书的电气人员进行安装和维护。
- 本产品应仅用于本说明书中所述的用途,且必须根据接线规则和当地法规进行安装。
- 使用带电部件时务必遵守相关规定。
- 对产品进行任何操作之前,务必切断电源。
- 重新连接电源之前,本产品必须正确安装且经过测试,确保操作的安全性。

若不遵守此说明,则可能会导致死亡或重伤。

注意

设备损坏

- 如果设备通过微型 USB 端口供电,只能使用随附的 AC 适配器。
- 如果设备通过接线端子供电,请仅使用合适的 12 VDC 电源。

若不遵守此说明,则可能会导致设备损坏。

- a. 墙盒安装
 - 使用标准86墙盒(深度大于47 mm)进行安装。
 - 建议使用12 VDC 外部电源为网关供电,例如 Schneider Electric Phaseo ABLM1A12021。
- b. 墙面安装
 - 建议使用随附的AC适配器为网关供电。
- c. 桌面摆放
 - 使用智能网关底座CCT501400_0001将网关放置在桌子上。
 - 建议使用随附的AC适配器为网关供电。

5 在线阅读系统用户指南

扫描二维码以进入“Wiser™ - 系统用户指南”页面,并选择适合的语言版本进行阅读。在使用系统前,请务必仔细阅读“Wiser™ - 系统用户指南”以了解网关及系统运行,配置和使用的相关信息。

技术参数

AC 适配器	型号: KA0601A-0501000DEU 输入: 100-240 VAC, 50/60 Hz 输出: 5.0 VDC, 1.0 A, 5.0 W 平均效率: 73.7% @115 VAC, 230 VAC 待机功耗: 0.1 W @115 VAC, 230 VAC
电源	AC 适配器(包含在包装内)或通过 2 脚接线端子的 12 VDC/0.5 A 电源(不包含在包装内)
连接器类型	用于 AC 适配器的微型 USB 端口 2脚接线端子; 电缆类型: 0.25 mm ² - 1.50 mm ² (24 AWG - 16 AWG)

通信接口	Ethernet: IEEE802.3, 10/100 base-T (LAN) Wi-Fi®: 2.4 GHz, IEEE802.11 b/g/n Zigbee: 2.4 GHz, IEEE802.15.4
工作频率	2405 - 2480 MHz (Zigbee) 2412 - 2472 MHz (Wi-Fi®)
最大射频发射功率	<10 mW (Zigbee) <67 mW (Wi-Fi®)
系统时钟	RTC 功能, 使用 CR1220 纽扣电池
IP 等级	IP20
工作温度	0 °C 到 40 °C, 仅限室内环境使用
相对湿度	10 % 到 90 %, 无冷凝的情况下
产品尺寸 (H × W × D)	86 × 86 × 34 mm
墙盒尺寸 (H × W × D)	75 × 75 × 47 mm 注意: 墙盒内深度必须至少为 47 mm。
通讯协议	符合 Zigbee 3.0 标准
认证	符合 CE 标准 本产品通过无线电发射设备型号核准。核准代码CMIIT ID显示在产品标签上。

部件名称	有害物质					
	铅 Pb	汞 Hg	镉 Cd	六价铬 Cr(VI)	多溴联苯 PBB	多溴二苯醚 PBDE
印刷电路板组件	X	O	O	O	O	O
塑料	O	O	O	O	O	O
金属	O	O	O	O	O	O
电池	O	O	O	O	O	O
电源适配器	X	O	O	O	O	O

本表格依据 SJ/T11364 的规定编制。
O: 表示该有害物质在该部件所有均质材料中的含量均在 GB/T 26572 规定的限量要求以下。
X: 表示该有害物质至少在该部件的某一均质材料中的含量超出 GB/T 26572 规定的限量要求。

- 商标**
- Wiser™ 是施耐德电气及其子公司和附属公司的商标和财产。
 - Zigbee® 是 Connectivity Standards Alliance 的注册商标。
 - Apple® 和 App Store® 是 Apple Inc. 的品牌名称或注册商标。
 - Android™ 是 Google Inc.的注册商标。
 - Wi-Fi® 是 Wi-Fi Alliance® 公司的注册商标。
- 所有其他品牌和注册商标均为其各自所有者的财产。

施耐德电气(中国)有限公司
北京市朝阳区望京东路六号A座
客户支持热线: 400 810 1315
se.com/contact